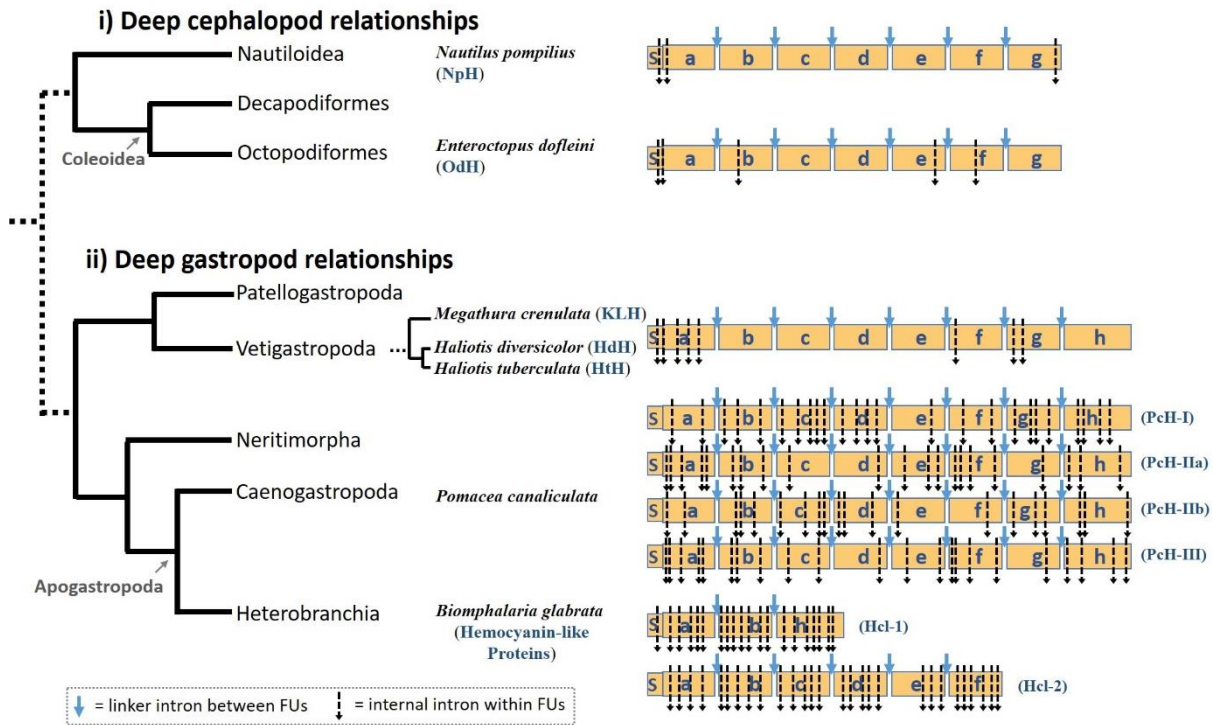


## Additional file 1



**Figure S1: Hemocyanin gene structures.** Species of gastropods and cephalopods with known hemocyanin gene structures and their relationships are shown on the left side. Exon-intron architectures of their hemocyanins (including hemocyanin-like proteins) are shown on the right side. Orange boxes represent the different functional units FU-a to FU-h and the signal peptide S. Blue arrows symbolize splice sites of linker introns that lie between the FUs (conserved at the same position for all species). Dotted black arrows symbolize splice sites of internal introns. Their number and positions vary among the different gene structures.